



**ANNUAL  
REPORT  
2021 / 2022**

Artwork by Zimia King



# Contents

1	Front Cover	15	Supported and Valued
2	Contents / Sponsors & Supporters	16	Responsive to Need
3	Chairperson's Report	17	Responsive to Need
4	Strategic Plan / Our Board	18	Sustainable and Resilient
5	From The Executive Officer	19	Sustainable and Resilient
6	Our Staff	20	Treasurer's Report 2021/22
7	Our Staff	21	Statutory Declaration
8	From the Community Development Manager	22	Auditor's Report
9	Programs, Services and Activities	23	Financials
10	Engaged and Connected	24	Financials
11	Engaged and Connected	25	Financials
12	Engaged and Connected	26	Organisational Charts
13	Engaged and Connected	27	How To Become Involved
14	Supported and Valued	28	Back Cover

## 2 Supporters



### Food Pantry Donations

Aldgate Bakery  
Aldgate Village Well  
ALDI Stirling  
Bakers Delight Stirling  
Coles Bridgewater  
Foodbank  
Old School Community  
Garden

Rotary Club of Stirling  
Secondbite  
Seventh Day Adventist Stirling  
Stirling Fruit Mart  
Uniting Church Bridgewater  
Woolworths Stirling

### Fundraising Donations

Stirling Business Association  
Aldgate Village Well  
Balhannah Hotel  
Basket Range Baker  
Bridgewater Inn  
David Booth  
Deviation Road Winery  
Jarrett Nissan

Konditorei Stirling  
Red Cacao  
Tapanappa Wines  
Thomas Gas  
The Farm for Wellbeing  
Warawong Sanctuary  
Zinia King

# From the Chair

It gives me great pleasure to deliver my 3rd and final annual report as Chairperson of The Hut Community Centre.

This annual report shows cases the work of The Hut over the past 12 months. It is an impressive record of our community services and new initiatives to meet the needs identified by our members, clients, visitors, employees, volunteers, and our stakeholders.

During these challenging times the pandemic created many challenges and restrictions, it also created opportunities to support our clients' safety, health, and wellbeing by providing a range of special interest activities and events in the community centre as well as opportunities to engage in the Adelaide Hills Community.

To deliver this diverse range of Hut services we continue to see an extraordinary commitment of hours by all our staff (both paid and volunteers) and a very high standard of service achievement. We are continuing to ensure our programs and activities are inclusive and are working through a range of strategies to increase accessibility. This is reflected in our continued accreditation through the Australian Service Excellence Standards accreditation, some details of which are covered in the Executive Officer's (EO's) report.

An important and necessary part of our strategic journey has been the expansion of our services and we are well progressed with our strategy to have less reliance on Government grants.

The Hut's Book Shed is the envy of most community centres for its continuing success and because of this we are now expanding our reach with another Book Shed being established in Woodside and I am sure it will be as successful. A very big thank you to all involved in getting this off the ground. Although some of this is out of -our control, we are hoping that the opening will be towards the end of the year.

Significant contribution to the success of The Hut is made through its Board and over the past six years the emphasis of Board agendas has reflected the increasing impact of legislative intrusion into the community services sector.

Determining how to respond to the numerous demands made upon our community centre while maintaining its financial viability, meeting all governance requirements, not burning out staff and minimising the bureaucratic impact on our volunteers is quite a challenge. The Hut has been extremely fortunate in being able to recruit a very well-balanced and talented Board that work well with the Executive Officer and the Community Development Manager to meet these challenges.

This year we welcomed a new Board Member Geoff Keynes who has worked well with the Board over the past 8 months.

To all our stakeholders, including all our members and the Adelaide Hills Council thank you for your continual support during these challenging times. This support has enabled The Hut to continue to provide a high quality and professional service to our clients and the community.

Having served my second three-year term on the Board I am no longer eligible to continue and so resign my position.

As I step down off the Board, I am confident we have the right leadership to continue to steer The Hut in the right direction to deliver against our Strategic Plan.

I wish to thank Greg Stevens and Sylvia Pembroke, who are also stepping down due to having completed their 6 years on the Board and Jana Norman who has retired, for their service and support given not only to me but The Hut as a whole.

## Loraine Scheide

Board Chair



### Board Member Attendances 2021/2022

Board Member	Number Attended	Number Eligible to attend
D Rawnsley	11	11
J Norman	7	11
G Bussell	11	11
G Stevens	6	11
F Turner - 6 year term expired Dec 2021	3	6
J Kemp	10	11
L Scheide	11	11
S Maslen	6	11
S Pembroke	11	11
A Croser	9	11
G Keynes - elected to Board Nov 2021	7	7

\* Previous Board members and their attendances



# Strategic Plan

**VISION:** To support and positively influence a thriving, connected and inclusive Adelaide Hills Community

**MISSION:** As a safe and welcoming community centre, we invest in opportunities that enrich the lives of our diverse community and support people to engage, connect and grow

## Community is ENGAGED AND CONNECTED

### GOAL 1

Community engage in activities that enhance growth, development and well-being

### OBJECTIVES

- 1 Community access support and opportunities that reduce the impact of disadvantage, social isolation and loneliness.
- 2 Community participate in activities and volunteering opportunities that promote growth and well-being.
- 3 Community feel supported to be able to prepare for, and respond to, natural disasters.
- 4 Community members have strong connections to their community through education, volunteering and engagement activities.
- 5 Our community's knowledge of, and connectedness to environmental sustainability, local culture and history is enhanced.

## Our people are SUPPORTED AND VALUED

### GOAL 2

Community feel valued and supported to contribute to the Adelaide Hills Community.

### OBJECTIVES

- 1 Our Volunteers & Staff engage in meaningful and fulfilling that further develop their confidence, skills and abilities
- 2 Community contributions are acknowledged and celebrated.
- 3 Community and cultural diversity is embraced and reflected in our programs and activities.
- 4 We provide a culture and environment that promotes positive mental health and well being
- 5 Our programs, services and activities are accessible, relevant and inclusive to a diverse community
- 6 We provide opportunities for community to build resilience through participation

## We are RESPONSIVE TO NEED

### GOAL 3

Community has the capacity and support to enable effective local responses to current and emerging needs.

### OBJECTIVES

- 1 Our resources are equitably distributed to provide assistance and support where there is an identified need.
- 2 Our resources, reach and collective impact are maximised through collaboration with others.
- 3 Our work with community is informed through identifying and monitoring current and emerging needs and trends.
- 4 Diversity is acknowledged and valued through being culturally aware and inclusive.
- 5 We are flexible in our responses to community events and individual needs; assisting within the parameters of our resources and skills.
- 6 Education, skills development & training are provided to support personal development & employment pathways.

## Our Organisation is SUSTAINABLE & RESILIENT

### GOAL 4

Our values, strong leadership and governance support our Vision, Mission and community impact.

### OBJECTIVES

- 1 Our facilities and programs are welcoming, relevant, responsive and inclusive.
- 2 Our programs and services are appropriately resourced to meet identified needs.
- 3 We have sufficient financial reserves to maintain our community impact and future commitments.
- 4 We actively promote The Hut to raise awareness of our role and impact in the community.
- 5 We are environmentally responsible with efficient systems, processes and practices.

## Our Board



LORAIN SCHEIDE,  
Board Chair  
Appointed Chair  
October 2019



JOHN KEMP  
Deputy Chair  
Board Member  
since January 2015



GREG BUSSELL  
Board member since  
September 2015



GREGORY (GREG) STEVENS  
Board Member  
since October 2016



SYLVIA PEMBROKE  
Treasurer  
Board Member  
since October 2016



FRAN TURNER  
Board Member  
since October 2015



SHARON MASLEN  
Board Member  
since October 2018



DAVID RAWNSLEY  
Board Member since 2019



ANN CROSER  
Board Member since 2019



JANA NORMAN  
Board Member  
since 2019



GEOFF KEYNES  
Board Member  
since March 2022



# Executive Officer Report

Our 2022-26 Strategic Plan was approved at the last AGM so the team here has been planning activities to meet the updated direction. Our focus areas are consistent with our last plan but with an updated focus on diversity and inclusion, increasing access to activities that aim to decrease social isolation and loneliness through outreach and increasing cultural and environmental awareness. See Strategic Plan on page 4.

We've endeavoured to provide a good overview of what we've achieved over nine months throughout this annual report and I hope you enjoy reading it.

The Adelaide Hills Council and The Hut have developed an excellent working relationship that covers collaboration with key events such as the Stirling Community pageant and fair, Hills Connected Communities and other community events. The Hut also manages the Community Bus that takes older community members in the Ranges Ward area on shopping and social outings. The Adelaide Hills Council acknowledges the value The Hut contributes to community and have agreed to another three (3) years of support. I'd like to thank the Council, especially the Community Engagement team headed by David Waters and Rebecca Shepherd and the out-going CEO, Andrew Aitken for their ongoing support.

We are continuing to press ahead with the planning of a new Book Shed at Woodside. We have submitted, and then subsequently updated, many plans for Council's and Highways planning approval and hope that we are on the tail end of this process. A massive thank you to Board member David Rawnsley for helping to drive this project forward.

Other developments have included the extension on our Community (woodworking) Shed. Additional floor space, as well as new equipment has made a big difference and we are seeing a great many new and interesting projects being completed. Thanks to our Community Shed supervisors who have assisted with this upgrade and continue to provide immense guidance for community members wanting to learn new wood working skills.

Despite the restrictions placed on community events we managed to hold a scaled back Christmas event in Stirling. Thank you to the Adelaide Hills Council, Josh and his team at Harris, and the Stirling Business Association and Stirling Markets for their ongoing support and financial sponsorships, enabling us to keep bringing this fantastic event to fruition each year. We are all hopeful that we will have limited restrictions on numbers and Covid requirements next year and be back in full swing.

We continue to strive for excellence in what we do and as such, undertake the Australian Service Excellence Standards (ASES) review every three years. We have booked our external audit to achieve this and have been working hard behind the scenes to achieve this later in 2022. An external assessor reviews our Governance practices, policies, procedures and how we work and engage with and within community. Thank you to those who have agreed to be interviewed for this process.

We said farewell to two significant people this year from our paid staff with Sandra Veitch (Finance Officer) retiring after 15 years and Jenny Kemp (ACE Coordinator) after 10.5 years. Both Jenny and Sandra took on significant roles and we miss you both in those positions. I am very pleased however to welcome Ivonne Allen to the Finance role and Sandra continues to come in to share her expertise and knowledge and keeps us on our toes! We also welcomed Mamie, Courtney and Jo in July all have brought their own skill sets and knowledge to the team.

We said our own personal goodbyes to Ian Holland late last year. Ian was a significant part of our team and assisted with the building of many of our buildings including the community shed extension. Ian was a community shed supervisor and maker of wooden items that we sold across a number of outlets. He was a part of our Strategic Planning group last year and was negotiating with Council for the Woodside Book Shed development. Ian's 'can do' attitude, willingness to help anyone and his immense skills and contribution has been, and will continue to be, greatly missed.

Finally, I'd like to thank my team for their passion, drive and diverse skills and experience that they are constantly willing to share, our amazing pool of volunteers who always brighten my days and keep me entertained throughout my week and make it a delight to come to work every day. I'd also like to thank the Board for their support, guidance and wisdom over the past 12 months, especially our outgoing Chair, Loraine Scheide for being such a dedicated and passionate advocate for The Hut and the work we do in community. I look forward to welcoming new Board members at the AGM.

## Deb Bates



## FAREWELLS

We farewelled Sandra Veitch who retired after 15 years as Finance Officer, and is now volunteering in the community centre and Book Shed

We also farewelled Jenny Kemp this year after 10 years as ACE Coordinator





# Our Staff

## VOLUNTEERS

### 20+ YEARS

John Dowe  
 John Goslett  
 Kay Harlow  
 Deane Kowald  
 David Manson  
 Val Manson  
 Roy Spark  
 Rosemary Van Der Meer  
 Sandra Veitch  
 John Warren  
 Marie Weatherald

### 15+ YEARS

Anita Aspinall  
 Shirley Bennett  
 Joy Buckley  
 Gordon McLean  
 Trevor Peak  
 Sandra Rolfe  
 Max Schultz  
 Tina Stoeger  
 Derek Stott  
 Dianne Thompson  
 Fay Wigney

### 10+ YEARS

Chris Astley  
 Elizabeth Astley  
 Maureen Atkinson  
 Barbara Barenfanger  
 Jane Bleby  
 Greg Bussell  
 Mark Caldicott  
 Barbara Davies  
 Bill Deed  
 Eve Evans  
 Claire Hayes  
 Paul Howe  
 John Kemp  
 Carolyn Lamerichs  
 Laurie Manna  
 Arthur McPhail  
 Geny Meek  
 Marilyn Moloney  
 Lori Nielsen  
 Gill Osborne  
 Chris Patten  
 Judith Remes  
 Len Rolfe  
 Jurgan Sawon  
 Loraine Scheide  
 Ted Setnikar  
 Williams Stephen  
 Clare Tomkins  
 Jane Van Mierle  
 Geoff Welch  
 Martin Woods

### 5+ Years

Barbara Anderson  
 Anne Austin

Chris Bartsch  
 Genny Bennett  
 Ed Bradley  
 Peter Bulman  
 Sally Christopher  
 Gary Coats  
 Owen Crees  
 Sue Crees  
 Brian Dawson  
 Terri Dawson  
 Pauline Ellis  
 Robyn Gabbett-Mulhallen  
 Sue Hardy  
 Gaynor Harris  
 Leo Hazebroek  
 Catherine Hewitt  
 Tony Hooper



### Vale Ian Holland:

Ian started with The Hut in 2002 and was able to share his immense talents through a range of projects from building works to shed extensions, assisting in the book shed, training community members in a range of skills including how to make an ottoman. Ian was a part of the strategic plan development group and was a valued woodworking supervisor in the community shed. He has left his mark on The Hut and on all who knew him. R.I.P Ian

Jim Howe  
 Denny Hunter  
 Peter Jackson  
 Jo Jarvis  
 Doris Johnston  
 Bob Kelso  
 Geoffrey Keynes  
 Gwen Miller  
 Mary Minagall  
 Andrea Nesbitt  
 Anne O'Brien  
 Sylvia Pembroke  
 Di Percy  
 Helen Pierce  
 Patti Rasch  
 Janice Roberts  
 Thomas Shillabeer  
 Greg Stevens  
 Michelle Tamblyn  
 Tom Tamblyn  
 Rob Tanner  
 Fran Turner  
 Fergus Veitch  
 Lis Wallace  
 Christine Whiting

### 0-5 Years

Bernice Addison  
 Grant Alexander  
 Roy Anlezark  
 Sheila Arnold  
 Peter Bleby  
 Theresa Blundell  
 Carolyn Brennan  
 Libby Brookman  
 Fiona Bymes  
 Andrew Channing  
 Cula Christodoulous

Silvana Codr  
 Claire Coldrey  
 Peter Coldrey  
 John Cooke  
 John Cooper  
 Ann Croser  
 Trevor Cumow  
 Peter Davey  
 Jane Disher  
 Adrian Dormer  
 Andrea Earl  
 Roger Ellinger  
 Maggie Farrell  
 Lucy Farrow  
 Maxine Fischer  
 Mark Furness  
 Chris Goring

Fran Grant  
 Lexi Gray  
 Susan Greenwood  
 Barry Gregson  
 Liz Heathfield  
 Tony Herve  
 Julie Jennings  
 Jaye Jinnette  
 Inez Johnson  
 Ross Kealley  
 Sue King  
 Cynthia Kradolfer  
 David Lloyd  
 Raelene Lobban  
 Zoe Long  
 Priscilla Loughhead

Joanna Mansueto  
 Paul Martin  
 Sharon Maslen  
 Helen Mcbeth  
 Bronya McGovern  
 Jacqui McLean  
 Bron McNab  
 Mark Minchin  
 Sally Mum  
 Alan Musa  
 Bruce Nankivell  
 Jana Norman  
 Cheryl Oliver  
 Johan Overbeeke  
 Linda Palmer  
 Kay Pocock  
 Sally Pope  
 Monique Rammers  
 Mark Randell  
 David Rawnsley  
 Jake Reedman  
 Isobel Rogers  
 Tony Rogers  
 Wendy Rutter  
 Jenny Semczuk  
 Nick Sholl  
 Catherine Smith  
 Jamie Smith  
 Paul Stewart  
 Malcolm Stratford  
 Lee Tai  
 Jonathan Thurston  
 Jan Walker  
 Neil Wallace  
 Jim Waterhouse  
 Barry Westin  
 Stephanie Whyte  
 John Williams  
 Tammy Wise  
 Kim Yap

## PAID STAFF/HOURLY PAID INSTRUCTORS

### OPERATIONS

Executive Officer; Deborah Bates (1.0 FTE)  
 Finance Officer - Sandra Veitch retired Oct 2021 / Ivonne Allen commenced Sept 2021 (0.7FTE)  
 Office Whiz (Admin Support) - Jo Jarvis (0.4FTE)  
 Cleaners - Dani Groening/Marie Weatherald

### PROGRAMS / COMMUNITY DEVELOPMENT

Community Development Mgr - Bemadette Reading (1.0 FIE)  
 Community Programs Officer - Courtney Dean (0.4FIE)  
 Support Services Officer - Hayley Everuss (0.4FIE)  
 Community Connections Coordinator - Mamie Bennett (0.7FIE)

### HOURLY PAID INSTRUCTORS / TUTORS

Janet Leitch - Music Makers  
 Jo Jarvis - Mosaics  
 Carol McAteer - Bounce Child Care  
 Shannon Barton - Bounce  
 Hannah Stubing - Bounce  
 Josephine Jinnett - Fun & Fitness  
 Tony Herve / John Kemp - Adult Education tutors





# Our Staff





# From the Community Development Manager

Diversity within our community is such an important way to bring in new ideas and experiences, where people can learn from each other and strengthen social groups.

Diversity has been a key focus for the Community Development team this year with a range of programs that have offered education, awareness, connection, and a whole lot of fun. These have included Jewellery making, Aboriginal dance, Bush tucker and music around the campfire and Sounds of Nepal Sound Bath.

We held a very special event to celebrate Harmony Week with a Didgeridoo and Dance performance by David Booth, Namaste Singing Bowls demonstration, and a range of delicious cultural foods.

This Harmony Week event was the first of our inaugural 'Sunset Sessions', an evening event with a focus of bringing people together in an informal social space. This was also a great opportunity to utilise the fantastic outdoor space we have, 'the platform' and turn it into a well-lit wonderland with good music, good friends, and good food. Volunteers were integral in the setup of this event and I thank them for their involvement. We aim to continue the Sunset Sessions during the warmer months.

We know how important social connections are for a person's well-being, so we are continually thinking of ways where we can provide opportunities for these connections. 'Station Socials' was created this year as part of the Community Connections Program, with the aim to provide a more creative and energetic way to connect with others. Participants went indoor bowling, made candles, and multiple 'Paint and Sip' events were held. The Community Connections Program is a new program this year that assists people to build their social connections and achieve their goals through a structured and supported 12 week program. The program is still very new but we have already seen some fantastic outcomes, you can have a look at these on page 12.

Our ongoing programs have certainly had to overcome some difficult times with covid having a major impact on attendance. These programs include Fun and Fitness, Strength and Balance, Men's Moves, Walking Groups, Chair Yoga, Out and About, Blokes Club, Repair Café, Leadlight, Mosaics, Community Shed, Homework Club, Music Makers, Community Lunch, Bus and transport program and Community Garden. Most of these programs are coordinated by volunteers and are such an integral part of the community. The volunteers have had to do additional coordination throughout covid to keep up with the rapidly changing requirements associated with covid. The Book Shed volunteers have also had to deal with some significant changes to ensure a safe working environment and to keep the doors open.

Thank you to all of these volunteers who dedicate such a large part of their life to these programs and making them the success that they are.

New staff have joined us this year which has enabled the formation of a Community Development team. This team is made up of program staff who work cohesively to ensure the programs we are offering to the community are diverse, inclusive, and are addressing community need. It has been an exciting year for new ideas, with staff bringing in a wealth of knowledge and experience. Thank you to the team for their dedication to our community and their never-ending enthusiasm.

**Bemadette Reading**

**COMMUNITY DEVELOPMENT MANAGER**



▲ 20 YEARS AT ALDGATE RAILWAY STATION



▲ SUNSET SESSIONS





# Programs & Activities

## ONE-OFF / SHORT COURSE/WORKSHOPS

- Sunset Sessions – Curry Night
- Station Socials - Indoor Bowling, Candle Making, Paint and Sip
- Bushfire Insurance Crash Course
- Print Making
- CFS Community Breakfast
- Christmas Crafts
- TakeTina

## Self-Awareness Courses

- Body Confident Children's and Teens
- Sight for All Information session
- AGL Energy Literacy Session

## Cultural Activities

- Sunset Sessions - Harmony Day event
- Jewellery making with David Booth
- Reconciliation Week – Bush Tucker & Music around the Campfire
- Sounds of Nepal Sound Bath
- Aboriginal Dance with David Booth

## Activities for Kids & Families

- Nature Playgroup
- Preschool Gymnastics and Circus Skills
- Children's Natureplay Craft
- Café and Music Mornings
- Snake Awareness
- Claymation
- Come and Try Table Tennis
- Curious Creatures with Zinia King
- Play on the Platform
- Making a Fairy Garden
- Worm Farms for Kids
- Beekeeping for Families
- Bee Workshop for Kids
- Ocean Voice Workshop

## Adult Community Education (ACE) Accredited

- Pathways to Horticulture
- Microsoft Office for Work



▲ DAVE ON THE DIGERIDOO

## ONGOING PROGRAMS

### Healthy Living and Fitness

- Strength and Balance
- Community Fun and Fitness
- Men's Moves
- Chi Kung
- Chair Yoga
- Walking Groups
- Bounce
- Aldgate Organic Food Co-Op

### Interest and Social Groups

- Blokes Club
- Community Shed - Woodworking
- Music Makers
- Out and About
- Community Garden
- Gardening with AHH Lifeskills
- Repair Café
- Sewing Group
- Homework Club
- Mosaics
- Leadlighting
- 1:1 Computing

### Low Income and Senior Support Services

- Community Lunch
- Community Shopping Bus
- Mystery Trips and Outings
- Emergency Financial Assistance
- No Interest Loans (NILS)
- Food Pantry
- Budget Support
- Financial Counselling
- Transport to medical appointments
- Community Connections Program
- Tax Help
- Companion Animal Program

### Community Learning Program

- Intro to Small Business
- Intro to Care and Support

”

*I love sharing Culture and feel a deadly connection to The Hut at Aldgate...*

CULTURAL FACILITATOR

David Booth

“



# Engaged and Connected

## PROGRAM HIGHLIGHTS

- 29 new workshops were held with 386 attendees
- 48% of these attendees were aged under 25 years old
- A special event was held for Harmony week with 100 attendees
- 21 workshops held for Youth Week in collaboration with Mt Barker Community Centre, Adelaide Hills Council Community Centres, Youth Leadership team, Mt Barker Library
- Youth Week activities attracted 35 youth to The Hut
- 553 people participate in our regular programs weekly



### ▲ STRENGTH AND BALANCE -

- Improve strength and balance to reduce falls Tuesdays and Thursdays
- 1416 attendances



### ▲ HOMEWORK CLUB -

- Tutoring for students each Tuesday
- 105 attendances



### ▲ 1:1 COMPUTING -

- Support for older members to access the online world
- 54 people supported



### ▲ MENS MOVES -

- Exercise just for men held each Thursday
- 367 attendances



### ▲ FUN AND FITNESS -

- Tuesdays in Bridgewater
- 469 attendances



### ▲ REPAIR CAFE -

- Reduce waste through repair, 2nd Sunday of the month
- 131 attendances
- 332kg of waste saved from landfill



### ▲ MOSAICS -

- creative and fun held each Friday
- 241 attendances

### ◀ LEADLIGHT -

- Sunday evening tuition with all materials provided
- 39 attendances

### ▶ WALKING GROUP -

- Meets 4 days per week
- 621 attendances





# Engaged and Connected



## ◀ FOOD CO-OP -

- A cooperative purchasing organic produce each Friday



## ▲ OUT AND ABOUT -

- Monthly lunch group
- 110 attendances



## ▲ COMMUNITY LUNCH -

- Held monthly, delicious two course meal, fun and social connection
- 100 attendees



## ▲ PRESCHOOL GYMNASTICS AND CIRCUS SKILLS -

- Weekly program of fun
- 110 attendances



## ▲ MISS SUNSHINE MUSIC MORNINGS AND NATURE PLAY -

- Music, craft and fun on Tuesdays in the nature play garden



## ▲ PLAY ON THE PLATFORM -

- Giant games, fun and laughter each Thursday on the platform



## ▲ STEINER NATURE PLAY -

- Integrated family support sessions via Steiner Nature Play
- 66 families attended



## ▲ COMMUNITY GARDEN -

- Volunteers are in the garden twice weekly

## MUSIC MAKERS -

- Music tuition and community performances
- 638 attendances



## ▲ COMMUNITY SHED -

- Woodwork and friendship, 3 sessions per week
- 184 attendances

## CHI KUNG -

- Weekly gentle exercise
- 71 attendances





# Engaged and Connected

## COMMUNITY CONNECTIONS PROGRAM

At the beginning of the 2021-2022 financial year, the Community Connections Program was launched at The Hut. Community Connections is a new, statewide program funded by DHS, offering short-term support to help people build connections with local services, support networks and community or social groups. In the Adelaide Hills region, this program is offered by a web of program partners including Carers and Disability Link, Lutheran Care, Mount Barker Council, Mount Barker Community Centre, and The Hut Community Centre. The Hut and Mount Barker Community Centre collaborate closely on this initiative, delivering community based supports and interventions to address barriers to connection.

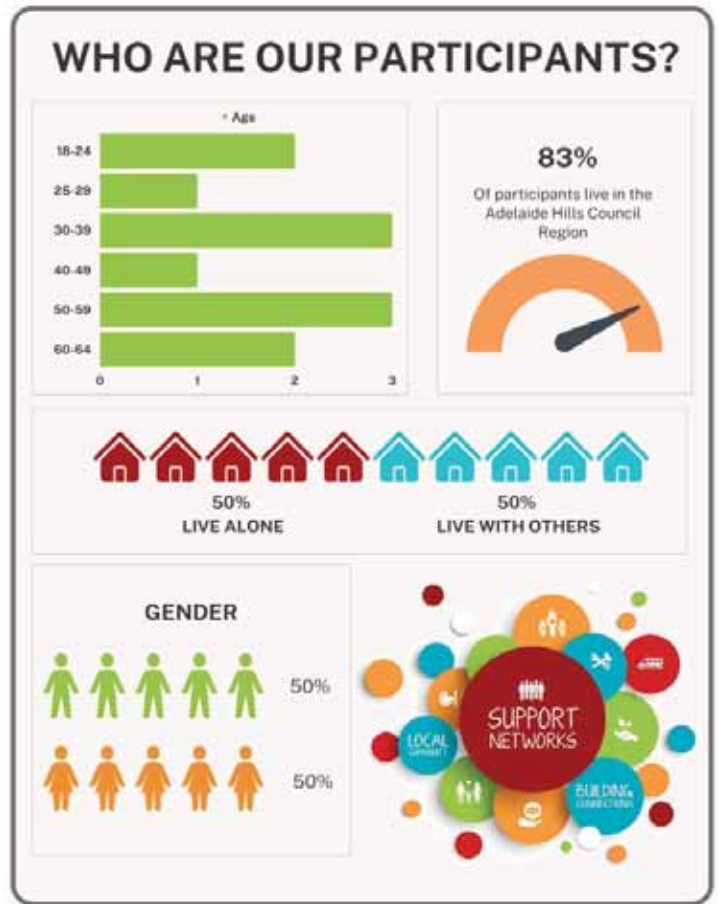
Thus far, The Hut has supported 13 participants over a 3 – 6 month period to develop and achieve personalised goals. Some of the goals that have been achieved include:

- Getting involved in local community activities
- Finding hobby or interest groups
- Exploring volunteering, employment, or training opportunities
- Connecting to other services for extra support
- Building confidence and skills to connect beyond the home

In late 2021, The Hut was successful in applying for the Wyatt Benevolent Institution's Digital Inclusion Grant to support the Community Connections Program. These grant funds have been used to provide participants with internet access, mobile services, and other digital technologies to enable participants to connect with family, friends, and services online. Similarly, these digital resources have been instrumental in supporting participants to achieve goals including undertaking tertiary study and accessing employment opportunities. We look forward to continuing to support participants through the Community Connections Program in the 2022-2023 financial year.

## Adult Community Education

This year, we provided adult community education with funding received by the Department of Innovation and Skills (DIS) and through the Community Learning Consortium coordinated by Community Centres SA. In all, we facilitated eight (8) adult education courses focussing on industry, employability skills and foundation skills. The courses, Horticulture and Computing (accredited), Intro to Small Business and Preparing for Work (non-accredited) were well attended with approximately 70% of students achieving Pathway outcomes. Courses were facilitated by local trainers that have industry specific skills, with the Horticulture students being very hands-on, attending several field trips to learn the skills and experience required to work in a horticulture business. On the job training was also provided with students learning about weed management and control while helping the Oakbank Community Hall committee maintain their weeds and the making of compost bins for our community garden!!



“

*What a fabulous job you guys do to support vulnerable people in our districts. Well done!*

COMMUNITY MEMBER PARTICIPANT

Summertown Uniting Church

”





# Engaged and Connected

## Hills Connected Communities

Hills Connected Communities (HCC) Consortium, funded by the Department of Human Services aims to support families with children, youth and vulnerable individuals by the provision of programs/activities to meet current gaps in services. It is a collaboration between The Hut Community Centre (auspicing body), Mount Barker Community Centre and the Adelaide Hills Council through their two centres, Torrens' Valley and The Summit. HCC is a six year collective impact initiative funded by the Department of Human Services.

### Outcomes of the collaboration include:

- In Reconciliation Week, June 2022, each centre conducted activities that had a focus on Aboriginal culture. These included stories around the campfire with damper making, bush tucker, jewellery making, didgeridoo and dance.
- Collaborative Youth Week events held across the hills in conjunction with all four community centres, Mount Barker Council and Youth Leadership team were well attended. Activities included Curious Creatures drawing class, Come and Try Table Tennis, Giant games on the platform, Nature Play, Come try, Virtual Reality, Youth refugee art exhibition, Bead making.
- The focus for programs conducted through all four centres has been Indigenous Culture, Art workshops, Youth activities, Health and wellbeing.

Funds received from DHS for Hills Connected Communities are distributed across all four community centres to assist with costs associated with employment of Project Officers, marketing and promotions and program development and delivery.

## Reconciliation Week: Bush Tucker & Music Around The Campfire

For Reconciliation Week 2022, The Hut Community Centre invited Courtney Hunter-Hebberman and James Butler to facilitate an event around the campfire. James prepared roo tail soup and flavoured roast emu and roo with native herbs and spices. James demonstrated a great depth of knowledge around cooking with Australian native animals and plants and attendees were fascinated to learn about the combinations of flavours in the spice mixes he used. Damper was cooked in the coals of the fire and attendees served a variety of native bush teas.

Courtney and James talked about reconciliation, what it means to them and their communities and how supporting children to explore the world around them and to build their own connection to the land is so important. They explored some of the injustices and barriers that first nations people face in Australia and the long term impacts this has on culture and wellbeing. Families were engaged and moved by their words and were able to learn more while connecting to others at this event.



“  
It has given me the confidence to make candles at home!  
Great presenter. Really made it simple and accessible.  
Candle Making Workshop participant



▲ CANDLE MAKING



▲ BEE HOTELS

“  
My girls did the native bee hotel making course, I was very happy and impressed with this workshop. My girls learnt so much about native bees and have been trying to find native bees in the garden ever since. The girls were so proud of their hotels, thank you for the great service you provide to our community.

Parent



▲ PAINT & SIP



► SOUND BATH





# Supported and Valued

## Volunteer Roles

### GOVERNANCE & COMMITTEES



Board Members, Policy & Procedure management, WHS committee, Finance committee, Book Shed committee, Pageant committee

### ADMINISTRATION

General, Reception, Program data entry, WHS, Information Technology support, Finance

## FUNDRAISING



Book Shed volunteers



Christmas Pageant & event volunteers



BBQ volunteers

- Maintenance,
- WHS Auditor,
- Building development

## VENUES

### PROGRAMS

- |  |   |
|--|---|
| <ul style="list-style-type: none"> <li>• Community Bus carers &amp; drivers,</li> <li>• Bus admin</li> <li>• Low Income Support Admin</li> <li>• NLS Interviewer</li> <li>• Food Pantry helpers</li> <li>• 1:1 computing</li> <li>• Personal Transport drivers</li> <li>• Community gardeners</li> <li>• Catering - Community Lunch &amp; events</li> <li>• Shed Supervisors</li> <li>• Leadlight tutor</li> <li>• Homework Club tutors</li> </ul> | <ul style="list-style-type: none"> <li>• Walking Group coordinators</li> <li>• Out &amp; About coordinator</li> <li>• Aldgate Valley Food Co-op committee</li> <li>• Men's Moves coordinator</li> <li>• Strength &amp; Balance instructors</li> <li>• Dog Walkers</li> <li>• Repair Cafe- repairers and coordinator</li> <li>• one-off workshop facilitators</li> </ul> |
|--|---|

## VOLUNTEERING

**21,428**  
Volunteer  
Hours

**201**  
registered  
volunteers

@ value of volunteering  
**\$999,000**

calculated @ \$46.62 p/h

**91%**

Volunteers who feel  
appropriately  
supported

**94%**

Volunteers feel  
Valued



Our volunteers extending their skills to increase the footprint of our community shed



Enjoying our twice yearly Volunteer thank you breakfast





# Supported and Valued

## Volunteering @ The Hut

We take volunteering very seriously at The Hut. We understand our value as a place for people to form social connections and to be engaged with and within their community. We work hard to provide opportunities for growth and empowerment for volunteers and seek options for people to give back to the community and to engage with others who may have different life experiences to share. 61% of our volunteers are female and 66% of our total number of volunteers are over the age of 65.

Results of a recent survey showed that 91% of our volunteers feel adequately supported to contribute to their community.



### Support through Training & Development

One of the ways we support our volunteers is through both structured (formal) and unstructured (on-the-job) training.

As a part of our commitment to Workplace Safety, 27 of our volunteers who are on the community bus, facilitate our fitness and walking groups or are key volunteers in high risk settings, completed their certification in 'Provide First Aid' and/or 'Provide CPR'. Fifteen (15) volunteers also achieved their driver accreditation for the bus and/or personal transport service.



### Supporting through Work Experience

In supporting young people who are interested in being involved in their community, we provided support for (four) 4 students to complete their placement at the centre. Three were students from local schools and Touraya, who is undertaking a Diploma of Community Services.

*The Hut Community Centre is such a welcoming place, I really felt part of the team and thoroughly enjoyed my work placement!*

Touraya



### Community Support through Volunteering

We also support local community events through volunteering in a range of activities such as BBQs, car marshalling and gate takings. This year we supported the following community events: Oakbank Interschool Cross Country, Oakbank Nationals Cross Country, Australia Day ceremony, Meadows Easter Fair, Open Gardens Scheme and the Stirling Christmas Family Fun Day helping to make Adelaide Hills events enjoyable and accessible.



### Celebrating our Volunteers – Civic Day Award

Congratulations to Thomas Shillabeer who received an Australia Day Civic Award for his long term commitment to volunteering. Thomas has been a volunteer with The Hut for eight (8) years and assists with the bus program, reception, administration support, IT and website, personal transport for seniors to medical appointments, test and tagging of equipment and first aid kit maintenance, events and bbq's.

*"I previously volunteered when The Hut was in Stirling. What drew me back to volunteer is how different The Hut is now and how much it has grown. I get a great feeling of satisfaction that I am doing something worthwhile."* Thomas



### Community working together

Seven Oaks Keyply knitting group have been knitting warm woollen beanies, jumpers, blankets and baby clothing for community members in need. These items have been generously donated for The Hut to distribute as needed. Thank you to these wonderful ladies who have a big heart and great community spirit.



# Responsive to Need


## Low Income Support

Our Low Income Support Programs consist of a range of services to support people in our community who are in financial hardship. These include our Food Pantry, provision of Emergency Financial Assistance through providing supermarket vouchers, fuel vouchers and bill payments (no cash); No Interest Loans (NILS), giving people access to fee and interest free loans for essential items; and helping people to link into other local services such as Financial Counselling which we have at the centre each week. Through all of our Low-Income Support Programs we provide a welcoming, non-judgement environment so we can build meaningful relationships with our community members and provide the best possible holistic support.

**Emergency Financial Assistance**

**213** instances of financial assistance

**99%** reported that their levels of stress would decrease as a result of receiving support



**13** Applications Approved

**No Interest Loans**

**\$15,070** in total loans

- Education 1
- Home Repairs 1
- Technology 3
- Car Maintenance 7
- Medical/Dental 2



“

*When struggling with day to day expenses, stress levels rise and everything feels overwhelming.*

*I never thought that we would need this support as have always just managed*

”

## The Food Pantry

We have seen a 75% increase in attendance to our Food Pantry this financial year with 30% of members reporting that their income continues to be affected by Covid-19. Our Food Pantry could not operate without our amazing volunteer army which has increased significantly this year and now consists of 20 dedicated people. With their help, we help to increase families' food security and prevent food wastage; each week on average we save 500kg of good food from landfill and support 40 families.

Local partnerships with food retailers in the area have enabled us to become more sustainable and increase the breadth of fresh food, fruit and vegetables and other shopping staples we can offer through the pantry.

16



“

*The Food Pantry is helping me eat better and improve my health. It also helps my mental health....”*

”



“

*I have volunteered in other places but nowhere is as good as here (The Hut). I've found my tribe!*

LIBBY - Volunteer

”





# Responsive to Need

## Social support options for Seniors

The community bus is out and about daily taking community members to shopping and on social outings. This service is available for people over the age of 65 who are living independently as a part of the Commonwealth Home Support Program.

The service is delivered on behalf of, and funded by, the Adelaide Hills Council and aims to increase social interaction and keep people connected with the community.



*When you are feeling a bit flat and alone ...a Thursday - "Something Different Trip" is bound to blow away the blues with good company and a shared meal!*

Our outings have included visits to the Bicentennial Conservatory, Art Gallery, Garden centres, Op Shops, Barossa Valley, Botanic Garden, Haighs Chocolates, Cruise on the Murray, Cockle Train to Victor Harbor, Monarto Zoo and many more.

This year there were a total of 303 shopping and social outings with 1325 attendances.

The bus service ceased for a period of time during covid restrictions however we continued to provide support to seniors through social connection over the phone.

As part of the program volunteers also provide transport to medical appointments and additional support to those with animals.

- There were 43 transports to medical appointments provided. This is a door-to-door service which is highly valued by the passengers who are limited with transport options. All volunteers have obtained driver accreditation this year.
- The Companion Animal Program connects with seniors who need assistance with walking and caring for their dog, it is also an opportunity for a regular chat and a cuppa. Volunteers build connections with the person (and the dog) and have provided 130 walks this year.



*I feel very grateful that The Hut provides a shopping bus for people like me several times a week. Also when I need to attend a medical appointment, The Hut provides a wonderful volunteer driver to transport me.*

*All of these volunteers are helpful, polite and friendly. They cheerfully give up their time to help seniors like me to continue to live in their own homes and lead as normal a life as possible.*

Victoria



*The volunteers that make our freedom possible give me a real lift & allow me to think again! Not only do they so generously give their time but are helpful, FUN, kind, flexibly accommodating to our very mixed, & somewhat complex needs!*

*The weekly local shopping trip allows me the autonomy of being able to organise & cater for my needs & stay in touch with availability, prices & plan for & budget my own money.*



# Sustainable and Resilient

This fourth pillar focusses on financial growth and stability, raising awareness of who we are and the benefits of what we do, ensuring our facilities and programs are relevant and inclusive and being environmentally responsible.



This year, we also trialled a major lottery. Despite our best efforts and loads of community support we saw limited financial benefit, however it was an exercise that brought great branding and awareness raising of The Hut and we learnt a few valuable lessons along the way.

Our fundraising efforts have also been thwarted this year due to COVID restrictions and not being able to hold the Christmas pageant and Fair to its full extent. We have however, commenced our 'to be regular' Quiz nights and sunset sessions.

## An Extension of the Vital Support of the Adelaide Hills Council

We are delighted to continue to receive the support of the Adelaide Hills Council through the extension of an annual grant of \$140,000p.a. over the next three years that will support us to continue to provide a broad range of services, activities and opportunities for a range of volunteering roles. We have an excellent relationship with the Council, working synergistically with its Community Services Team and Community Centres to provide a range of services and programs across the Adelaide Hills region.

**The Book Shed** in Stirling continues to be our main source of income outside of grants and we have embarked on the development of a second Book Shed in Woodside, with plans going into Council in late 2021. This will provide another source of revenue as well as giving us a stronger presence in Woodside and providing opportunities for community engagement and volunteering across a greater area of the hills.



The Hut Book Shed – Stirling, The Hut's community enterprise, has been once again well supported by community this year through the provision of second-hand book donations and sales with the revenue just shy of \$140,000. This is a 14% decrease from last year (2020/21) but a 12% increase from 2019/20, with Covid being a major factor.

Once received, books are cleaned, sorted and priced before being shelved in their genres by 54 dedicated volunteers. Our Instagram volunteer posts daily pics of newly received books and those difficult to find rare books are added to our collectibles collection. Operations are supported by a Book Shed committee consisting of volunteers and Hut management that meet monthly to ensure smooth and safe operations.

***Did you know the Book Shed has an Instagram page, with almost 1,000 followers? Follow us @bookshedstirling.  
Contact us if you see a book you like and we'll hold it for you - you can grab some great books before they make it onto the shelves!***



## Resourcing our Low-Income Support Activities and Reducing Landfill through Community Partnerships...

We are all feeling the pinch of the increased cost of living and there are an increasing number of people across the Adelaide Hills, living from week to week experiencing both food and housing insecurity. Our provision of support for individuals and families 'doing it tough' is made possible by funding received from the SA Government through the Department of Human Resources. We have leveraged off this support to partner with the following local Hills businesses and groups to provide additional food and assistance which, with their support, have able to provide approx. 24,000 kilos of (mostly healthy) produce to families, most of which would have otherwise been reduced to landfill! We are also proud of our partnerships with Mount Barker Community Centre and Carers and Disability Link in Woodside who help us to reach the wider Adelaide Hills region through distribution of emergency relief.



# Sustainable and Resilient

## OUR FACILITIES

### Diversity, Inclusion & Accessibility

One of our Strategic areas of focus is to ensure our programs, buildings and facilities are accessible to a broad range of people.



You will notice our fabulous Inclusivi-tree in our entry area of the centre. Many visitors to the centre have written a word on a leaf to describe their experience at the centre. The tree with its rainbow leaves helps to build a sense of inclusion and community.



▲ WEAR IT PURPLE DAY



A partnership with AHH Lifeskills



► RAISED GARDEN BEDS

### Being Dementia Friendly

Did you know that people living with Dementia can be terrified of stepping onto a black mat?

This year saw our first conversations with Dementia Friendly Communities with the aim of being certified as a Dementia Friendly centre. There are many synergies with being 'dementia friendly' with being a friendly centre for older people, for people who are vision impaired and with other forms of disability. With a little help from our friends at Dementia Australia and speaking with community members with lived experience, we have already actioned some very simple changes, such as better signage, and planned a few other changes to be implemented next year to ensure our space, programs and interactions are accommodating increase our accessibility at the centre.

## Christmas Event

With covid having such an impact on large scale events for more than a year, instead of cancelling the Stirling pageant for the 2nd year in a row we decided to run a smaller event to bring Christmas to Stirling. With support from the local community we held a Family Fun day on the lawns of the Stirling Library. The day consisted of free craft, animal nursery, food, giant games and live entertainment, and of course Santa.

Thank you to sponsors Harris Real Estate, Stirling Markets, Stirling Business Association, Adelaide Hills Council for helping us to make this event happen.



# Treasurer's Report 2022

The 2022 financial reports reflect another challenging year. The reported surplus for the financial year is \$ \$28,695. At the end of the 2021 financial year the net assets of The Hut were \$ \$537,068 and by 30 June 2022 this had increased to \$ 565,762. While the cash reserves (both restricted and unrestricted) decreased in the 2022 year by \$136,862, largely due to our Book Shed investment and community shed extension, the overall financial health of The Hut remains stable. This means that in the worst case situation where all traditional funding ceased, we would be able to continue to operate for approximately one (1) year. This reflects the importance of having sufficient cash reserves on hand, to not only seek opportunities to expand income generating activities, but also to be able to maintain those that are currently provided and that enable us to offer more services to the community in the future.

I would like to thank Deb Bates and her team for the excellent stewardship of The Hut's financial resources.

The profit achieved in 2021 financial year (due mainly to the Government Covid stimulus program) and previous accumulated profits enabled The Hut the move forward with the new book shed in Woodside. The transportable building was purchased, the existing cottage was improved, and some upgrades made. A special thank you to those volunteers who helped with the work done there. The cottage is now available for rent and negotiations are underway to fully lease it in the near future. It is hoped that the Book Shed, Woodside will be open for business by Christmas 2022. David Rawnsley, and Deb together with others beavering away in the background have worked tirelessly to get this project to fruition. Thank you to all concerned for your wonderful efforts. It is envisaged that once the new Book Shed is open for business it will contribute to the ongoing cash flow needs of The Hut.

The Book Shed in Stirling contributed \$139,372 in 2022 which is another outstanding effort yet again. The Stirling Book Shed is one of the main sources of income for The Hut. Thank you to all concerned.

Other budgeted items for the 2022 financial years included improvements in the computer equipment and software systems to increase the efficiency of administrative and reporting requirements of The Hut.

Volunteers have again been very significant in ensuring that The Hut is able to provide the amazing services it offers to the community. In the current economic climate, we are finding there is an increased need for The Hut's various services. They are the heartbeat of the organisation. Without the amazing efforts of all the volunteers we would not be able to continue this level of service. Volunteer hours decreased in the 2022 year due to restricted community activities (due to covid restrictions) to 21,753 hours representing a dollar value of \$922,300, which is an impressive contribution.

As this is my last Treasurer's Report, I would like to take this opportunity to express my gratitude to the members of The Hut and to the Board for providing me with this wonderful experience. I have enjoyed my six years on the Board and have been most impressed with the level of commitment of members and staff to the objectives of The Hut. The level of professionalism and dedication is reflected in the results of recent ASES quality review. The standard of governance is outstanding, and the systems and procedures are of the highest quality. There is a commitment throughout The Hut to continually improve and maintain the highest standards achievable.

I would also like to thank all the members of the board of The Hut for giving so generously of your time and expertise and wish the new board members well for the future. A big thank you to those that are finishing their 6 year term, Loraine Scheide for her wonderful work as Chair of the Board and to Greg Stevens for his fresh outlook on ways to develop The Hut in the future. The board consists of an incredible group of people who are a joy to work with and I am sure that The Hut will continue to grow and thrive with the new board.

**Sylvia Pembroke** CPA IPA CTP (B Bus (Acc), Dip Financial Planning)

*Treasurer*

*Finance & Audit Committee*





# Statutory Declaration



## Responsible Persons' Declaration

**The Hut Community Centre Inc**  
For the year ended 30 June 2022

Financial Declaration per section 60.15 of the Australian Charities and Non-for-Profits Commission Regulation 2013

The Responsible Persons declare that in the Responsible Persons' opinion:

- there are reasonable grounds to believe that the registered entity is able to pay all of its debts, as and when they become due and payable; and
- the financial statements and notes of the registered entity satisfy the requirements of the Australian Charities and Non-for-Profits Commission Act 2013.

  
Loraine Scheide (Chair)

Date: 28/06/2022

  
Sylvia Pomsenko (Treasurer)

Date: 28/06/2022

The Hut Community Centre Inc Association Report The Hut Community Centre Inc



## True and Fair Position

**The Hut Community Centre Inc**  
For the year ended 30 June 2022

Annual Statements Give True and Fair View of Financial Position and Performance of the Association

We, Loraine Scheide (Chair) and Sylvia Pomsenko (Treasurer), being members of the committee of The Hut Community Centre Inc, certify that:

- the statements attached to this certificate give a true and fair view of the financial position and performance of The Hut Community Centre Inc during and at the end of the financial year of the Association ending on 30 June 2022.

Signed in accordance with a resolution of the Members of the Committee on:

  
Loraine Scheide (Chair)

Date: 28/06/2022

  
Sylvia Pomsenko (Treasurer)

Date: 28/06/2022

The Hut Community Centre Inc Association Report The Hut Community Centre Inc

Page 2 of 28



# Auditor's Report

## Auditor's Report

The Hut Community Centre Inc  
For the year ended 30 June 2022

### Independent Auditors Report to the members of the Association

I have audited the accompanying financial report, being a special purpose financial report, of The Hut Community Centre Inc, which comprises the committee's report, the Statement of Financial Position as at 30 June 2022, the Statement of Profit or Loss and Other Comprehensive Income for the year then ended, Statement of Cash Flows, Statement of Changes in Equity, notes comprising a summary of significant accounting policies and other explanatory information, the certification by members of the committee on the annual statements giving a true and fair view of the financial position and performance of the association and the Responsible Persons' Declaration.

### Committee's Responsibility for the Financial Report

The committee of The Hut Community Centre Inc is responsible for the preparation and fair presentation of the financial report, and has determined that the basis of preparation described in Note 1 is appropriate to meet the requirements of the Australian Charities and Not-for-Profits Commission Act 2012 and Australian Charities and Not-for-Profits Commission Regulation 2013 and is appropriate to meet the needs of the members.

The committee's responsibility also includes such internal control as the committee determines is necessary to enable the preparation and fair presentation of a financial report that is free from material misstatement, whether due to fraud or error.

### Auditor's Responsibility

My responsibility is to express an opinion on the financial report based on our audit. We have conducted our audit in accordance with Australian Auditing Standards. Those standards require that we comply with relevant ethical requirements relating to audit engagements and plan and perform the audit to obtain reasonable assurance whether the financial report is free from material misstatement.

An audit involves performing procedures to obtain audit evidence about the amounts and disclosures in the financial report. The procedures selected depend on the auditor's judgment, including the assessment of the risks of material misstatement of the financial report, whether due to fraud or error. In making those risk assessments, the auditor considers internal control relevant to the association's preparation and fair presentation of the financial report, in order to design audit procedures that are appropriate in the circumstances, but not for the purpose of expressing an opinion on the effectiveness of the association's internal control.

An audit also includes evaluating the appropriateness of accounting policies used and the reasonableness of accounting estimates made by the committee, as well as evaluating the overall presentation of the financial report.

I believe that the audit evidence I have obtained is sufficient and appropriate to provide a basis for my audit opinion.

### Opinion


In my opinion, the accompanying financial report of the Hut Community Centre Inc, is in accordance with the Division 60 of the Australian Charities and Not-for-Profits Commission Act 2012, including:

- giving a true and fair view of the Association's financial position as at 30/06/2022, and of its financial performance for the year then ended; and
- complying with Australian Accounting Standards to the extent described in Note 1, and Division 60 the Australian Charities and Not-for-profits Commission Regulation 2013.

### Basis of Accounting and Restriction on Distribution

Without modifying my opinion, I draw attention to Note 1 to the financial statements, which describes the basis of accounting. The financial report has been prepared to assist The Hut Community Centre Inc to meet the requirements of the Australian Charities and Not-for-Profits Commission Act 2012 and Australian Charities and Not-for-Profits Commission Regulation 2013. As a result, the financial report may not be suitable for another purpose.

Auditor's Report



R. H. Homes FCPA, Registered Company Auditor 5285

21 David Terrace, MORPHETT VALE, SA 5152

Date: 18/10/2022



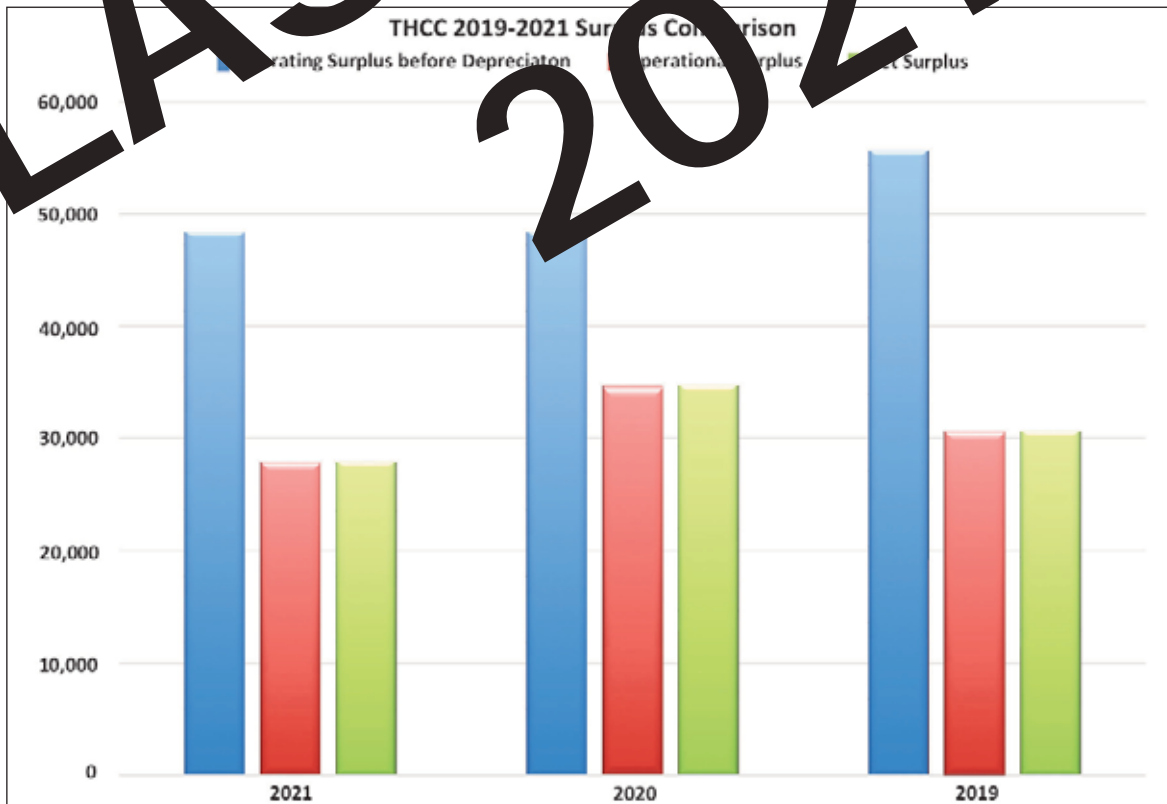


# Financials

1. SUMMARY OF INCOME & EXPENDITURE				
Item	Notes	2021	2020	2019
Operational Revenue	1	510,634	469,346	503,673
Plus Non Operational Revenue	2	207,954	68,503	0
Operational Expenses	3	675,759	489,564	448,080
<b>Net Operating Surplus before Depreciation</b>		<b>42,829</b>	<b>48,285</b>	<b>55,593</b>
Depreciation for the period		14,940	13,564	24,988
<b>Operational Surplus</b>		<b>27,889</b>	<b>34,721</b>	<b>30,605</b>
Other Income (Grant Programs)	4.1, 5	296,901	338,365	324,422
Other Expenditure (Grant Programs)	4.2, 5	303,901	338,365	324,422
<b>Grant Programs Deficit</b>	6	<b>7,000</b>	<b>0</b>	<b>0</b>
<b>Net Surplus</b>		<b>27,889</b>	<b>34,721</b>	<b>30,605</b>

## Notes:

- Includes income from Adelaide Hills Council Volunteer Support & Services (CHSP) grants, BookShed sales, fundraising, small grant donations and sponsorships received for operational purposes.
- Includes SA Government COVID 19 support (Business Boost and Job Keeper) payments, program specific donations, sponsorships and bank interest.
- Includes all expenses relating to The Hut operations including Executive, Finance, Client Support/Low Income, Community Development and Admin Support salaries, Volunteer management & support, utilities, audit, insurance, volunteer support and Hut activities programs not included in 'Other Income & Expenditure'. Includes 'top up' Job Keeper payments of \$37,000
- Includes provision of \$75,000 for the purchase and establishment of a facility as a second BookShed. The facility will become an asset in 2021/22 and show in the Balance Sheet.
- Includes Income for grant funded Hut programs, Adult Community Education (ACE) and Hills Connected Communities Consortium Program funding. \$179,558 was distributed to the Adelaide Hills Council and Mt Barker Community Centre for program delivery. The Hut is the Grantee for the Consortium therefore receives grant funding to distribute to consortium partners).
- Includes expenses for The Hut grant funded programs, Adult Community Education (ACE) and Hills Connected Communities (HCC). Includes \$179,558 distributed to HCC consortium partners to deliver on grant deliverables.
- Hills Connected Communities (HCC) programs managed by The Hut (Grantee) with an allocation of \$179,558 distributed to Mt Barker Community Centre and the Adelaide Hills Council (Torrens Valley and The Summit Community Centres) for agreed services and program deliverables.
- Final instalment of \$7,000 for ACE program funded by Department of Innovation & Skills, was received on 30 June 2020/21.



# Financials

2. WHERE OUR INCOME COMES FROM				
		2022	2021	2020
Commonwealth Government Grants	7	0	2,291	1,800
State Government Grants	7	309,581	371,089	409,480
Local Government Grants	7	174,150	168,254	164,912
Other Grants	7	106,997	16,374	5,062
Sponsorships/Donations		18,730	3,050	18,216
Fundraising		9,976	3,779	9,313
Trading/Sales & Raffle	8	252,070	261,770	191,920
Interest on Investments		3,456	4,024	7,008
COVID, Business Support & Other Revenue	9	74,998	191,858	68,503
<b>Total</b>		<b>949,958</b>	<b>1,022,489</b>	<b>876,214</b>

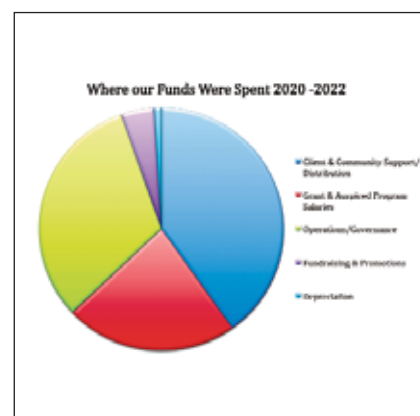
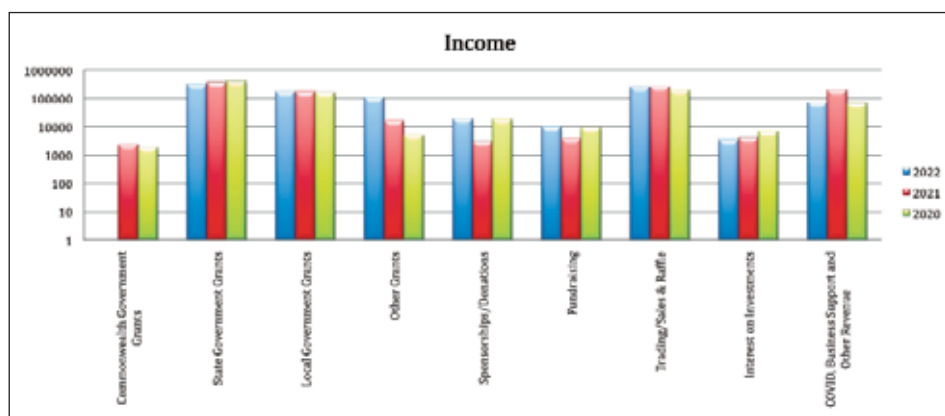
## Notes:

- 7 All Non-Government grant income including operational, Hut program specific grants.
- 8 Includes Book Shed sales, Product sales (Community Shed and plants), Christmas & People's Choice Raffle tickets and program attendance fees
- 9 Federal Government Job Keeper and Business Boost subsidies

3. WHERE OUR FUNDS ARE SPENT				
		2022	2021	2020
Client & Community Support/Distribution	10	370,233	268,289	260,139
Grant & Auspiced Program Salaries	11	209,461	182,149	227,389
Operations/Governance	12	292,235	480,200	295,681
Fundraising & Promotions		40,521	10,245	18,649
Depreciation		8,815	14,940	13,564
COVID-19 JobKeeper Top up Payments		0	38,778	26,070
<b>Total</b>		<b>921,264</b>	<b>994,600</b>	<b>841,492</b>

## Notes:

- 10 includes all Hut activities, services and program costs coordinated at The Hut and activities funded through Hills Connected Communities program (Consortium funded by Department of Human Services) through the Mt Barker, The Summit and Torrens Valley Community centres. Includes emergency relief vouchers (no cash given for ER) and food pantry staples (Grant funded) volunteer training & support and professional development. Includes 0.4FTE Community Development Manager salary (volunteer management and support, supervision and training), Low Income Support Coordinator and Community Programs Officer salaries and on-costs.
- 11 Grant Programs salaries include ACE and Community Learning Program Coordinators and tutors, Hills Connected Communities Coordinator and Community Connections Coordinator.
- 12 Includes Operational Salaries (Executive Officer, % of Community Development Manager, Finance Officer & 0.4FTE Admin Support Officer) utilities, insurance, audit, IT, website, building repairs, maintenance & cleaning, recycling (Book Shed) and Board expenses.



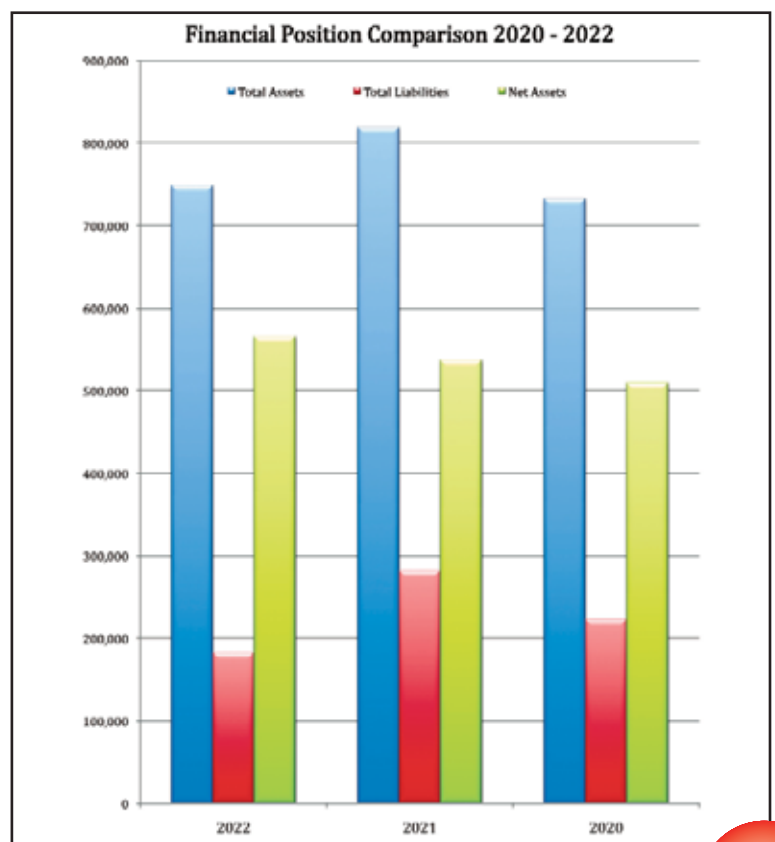


# Financials

<b>STATEMENT OF FINANCIAL POSITION</b>				
<b>Item</b>	<b>Notes</b>	<b>2021</b>	<b>2020</b>	<b>2019</b>
<b>Current Assets</b>				
Cash and Cash Equivalents		350,276	408,339	471,277
Restricted Funds	14	70,000	0	0
Receivables		40,373	19,172	2,356
Short Term Investments		60,000	0	0
<b>Non-Current Assets</b>				
Property, Plant and Equipment		98,756	95,980	107,987
Other Non Current Assets		4,137	550	550
Assets Under Construction	15	98,756	95,980	107,987
<b>Total Assets</b>		<b>748,542</b>	<b>819,041</b>	<b>732,220</b>
<b>Current Liabilities</b>				
Payables		13,653	12,258	9,902
Current Tax Liabilities		7,725	3,592	11,485
<b>Provisions</b>				
Provision for Annual and Long Service Leave	16	105,445	200,679	106,882
<b>Other Liabilities</b>				
Funds Held for Programs		41,181	49,963	41,427
Workcover Payable		0	-88	0
Payroll Accruals		14,776	12,151	7,925
Grants in Advance		0	3,419	45,419
<b>Total Liabilities</b>		<b>182,780</b>	<b>281,974</b>	<b>223,040</b>
<b>Net Assets</b>		<b>565,762</b>	<b>537,068</b>	<b>509,180</b>
<b>Members' Funds</b>				
Accumulated Surplus		366,172	337,478	309,590
Reserves		99,590	99,590	99,590
Reserve Fund		100,000	100,000	10,000
<b>Total Members' Funds</b>		<b>565,762</b>	<b>537,068</b>	<b>419,179</b>

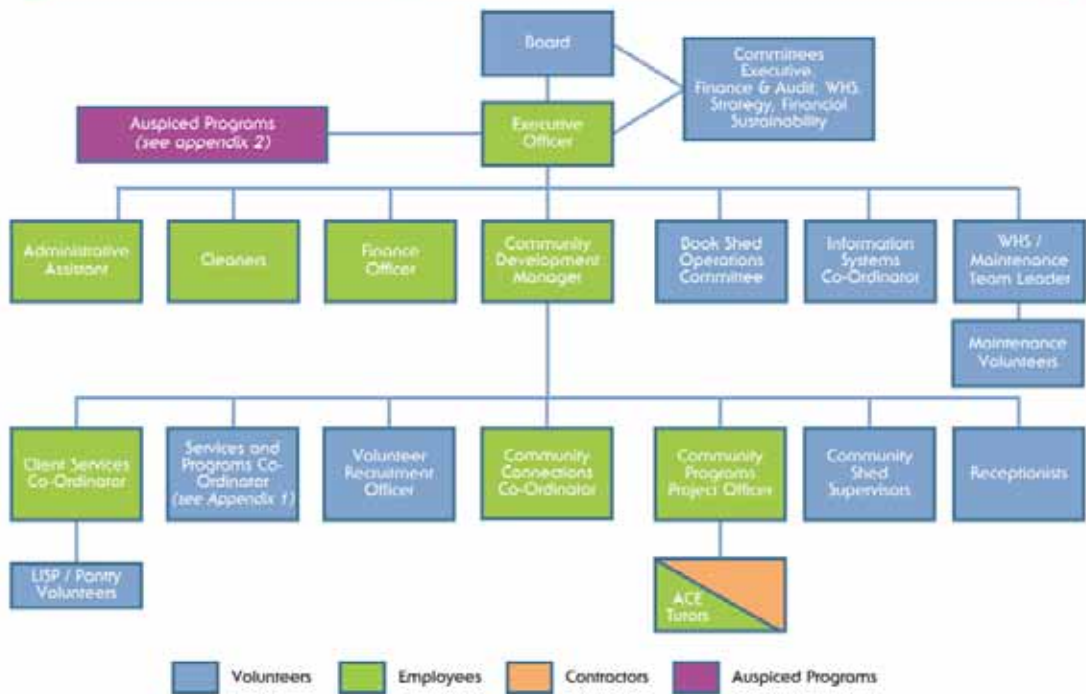
## Notes:

- 14 Provision for Annual Leave and Long Service Leave is incremented on an annual basis.
- 15 Movement of \$60,000 from PP&E to Assets under Construction due to the purchase of a transportable building for the Woodside Book Shed that is currently a work in progress (incomplete asset).
- 16 Provision for Employee Entitlements (Annual and Long Service Leave). Provisions are accrued from commencement of employment. Two staff were paid AL and LSL at end of their employment (2021/22) resulting in lower balance than previous year.

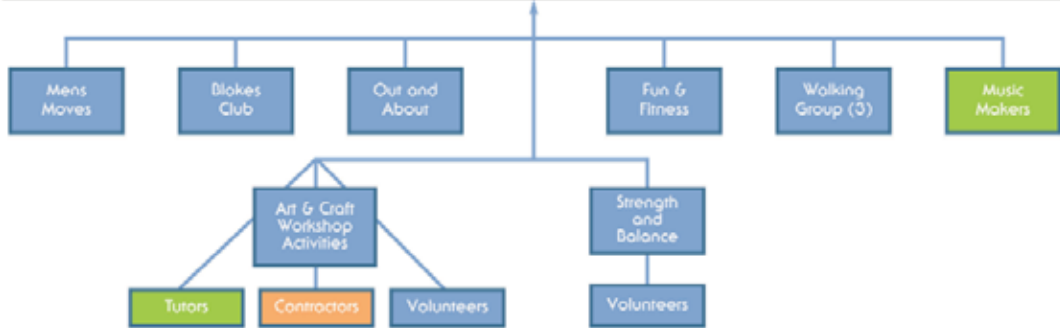


# Organisational Charts

## The Hut Organisation Chart 2021/22



## Services and Program Co-Ordinators 2021-22



## Programs of which The Hut is the "Auspicing Body"



26





# Become Involved

## MAKE A DONATION

The Hut is a registered charity therefore any donations made over \$2 are tax deductible.  
Your donation will assist our Low Income Support programs to make a real difference in the lives of hills residents under financial strain.

## DO A COURSE OR ATTEND A WORKSHOP

Get involved in one of our many activities and programs.  
Develop new skills and make new friends with people that have similar interests.

## LEAVE A BEQUEST

A bequest is a very real way to make a positive difference to the future of the work of The Hut Community Centre. Let your Will create a meaningful and positive legacy for future generations.

If you would like to know more about including The Hut Community Centre in your Will, please speak with our Executive Officer.

## SPONSOR A PROGRAM OR EVENT

**Stirling Pageant:** Around 10,000 people enjoy the day, lining up for the pageant through Stirling's streets in the afternoon and then spilling out onto the Oval for twilight at the fair.  
Become a Gold, Silver or Bronze sponsor and benefit from the additional promotion of your business as a community supporter.

### Other Sponsorships available:

The Hut welcomes ideas for sponsorship of other programs and services that help to fulfil our mission.

To find out more go to [www.thehut.org.au](http://www.thehut.org.au)

## FUNDRAISE FOR US

The extent of fundraising activities is limitless and only restricted by your imagination! Hold a sausage sizzle or cake stall at your school or workplace, hold a quiz night, a fancy dress evening, an annual review evening or morning tea. We will provide as much support as we can to assist you to make your activity/event a resounding success.

## VOLUNTEER

The Hut has volunteers involved in all facets of the organisation from driving community buses, helping in the Book Shed, tutoring students and many more.

Volunteering at The Hut can be rewarding and satisfying to both the volunteers and the community we serve.

Short or long-term roles are available to suit your time commitment and we aim to provide the best match for you. Contact our Community Development Manager for more information.





The Hut Community Centre  
1 Euston Road, Aldgate  
South Australia 5154

Phone: 08 8339 4400 • Web: [www.thehut.org.au](http://www.thehut.org.au) • Email: [reception@thehut.org.au](mailto:reception@thehut.org.au)

